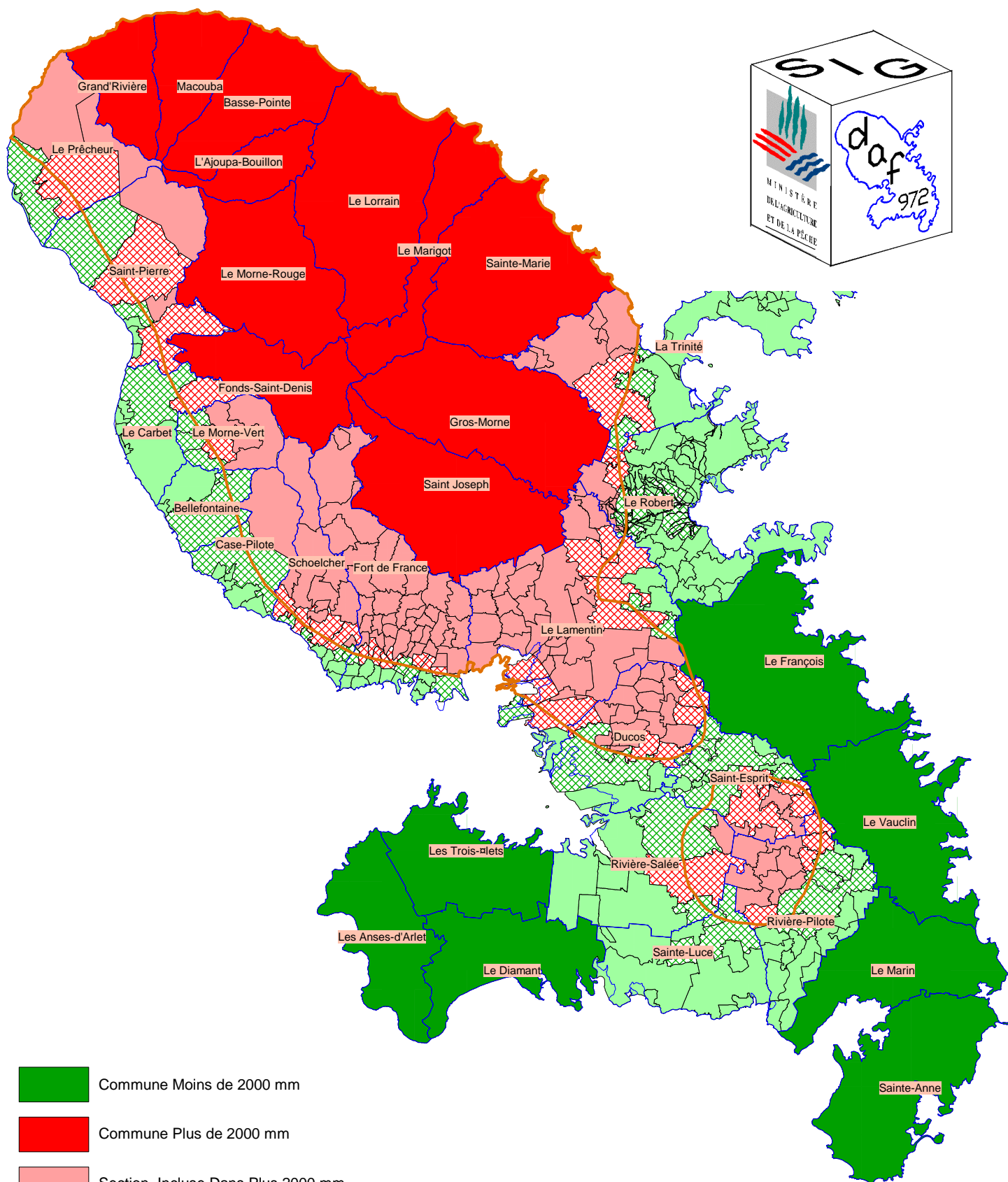




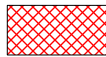
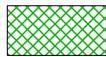



RELATION entre "SECTIONS CADASTRALES" & "PRECIPITATIONS ANNUELLES" de + ou - 2000 mm



-  Commune Moins de 2000 mm
-  Commune Plus de 2000 mm
-  Section Incluse Dans Plus 2000 mm
-  Section Incluse Dans Moins 2000 mm
-  Section Mixte Plus de 2000 mm
-  Section Mixte Moins de 2000 mm
-  Isohyète 2000 mm

